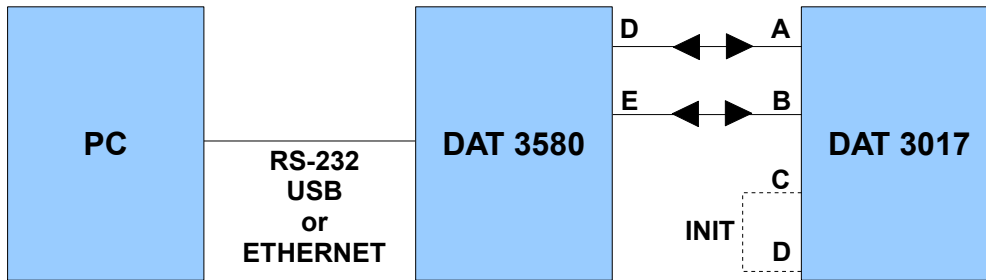


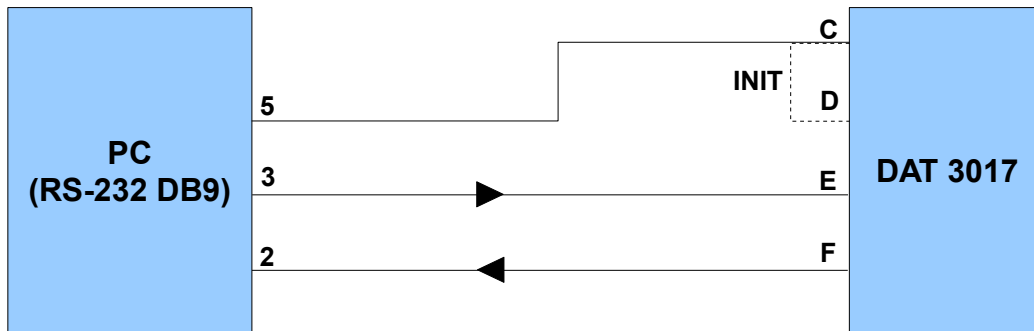
Using DAT3000Modbus software to setup DAT3000 series devices

**STEP 1 – Connect device**

**RS-485 devices:** Connect the PC to serial converter (DAT3580 or similar) and devices to setup as following:



**RS-232 devices:** Connect the PC to the devices to setup as following:



Please refer to the technical documentation of the device in use for the right connection.

**STEP 2 – Open the connection**

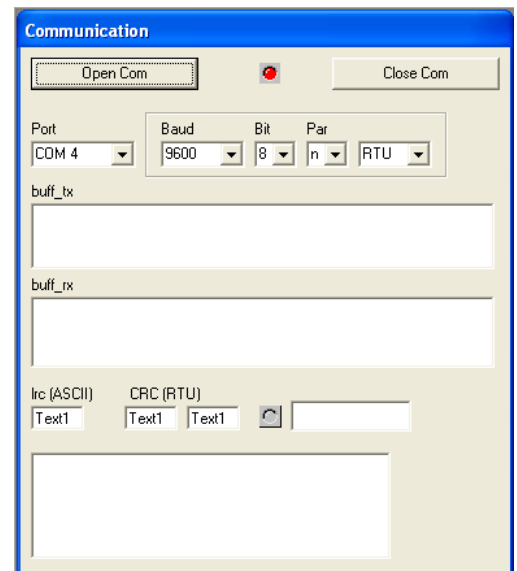
In DAT3000Modbus software, the Communication window is always visible.

→ If address or baud rate of the device is unknown, keep connected the INIT terminal (D) to the GND terminal (C) and reset the device (power off and power on). Until the terminals still connected, the device will communicate as address 1, 9600 bps and RTU mode.

→ Open DAT3000Modbus software.

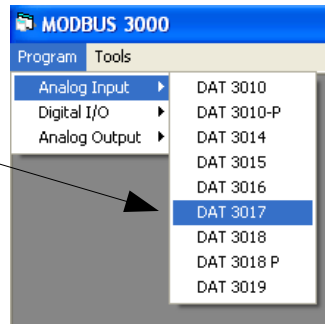
→ In the Communication window (always visible) select the proper COM port and the baud rate of the device (if INIT connected, select 9600bps and 8,n,RTU mode).

→ Click on “Open COM”. If the red led will turn on, the COM port will be successfully opened. If not, check for availability of the COM port and if it is free (not used by other software).



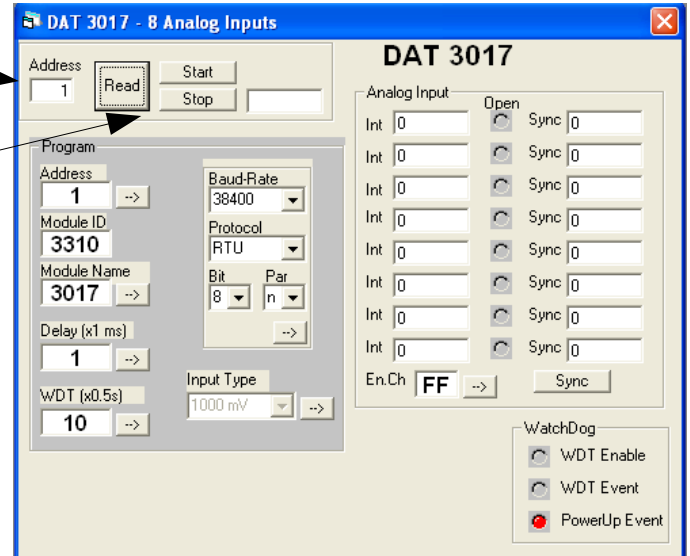
### STEP 3 – Read and change the device configuration

→ Open the device configuration form. Search in the “Program” menu for the proper device and click. The proper configuration form will be shown.



→ Set in the Address field at the top left the address of the device (if INIT connected, set 1).

→ Click on “Read”. All fields will show the actual setting. Click the “Start” button to update continuously the parameters. Click “Stop” to terminate the update.



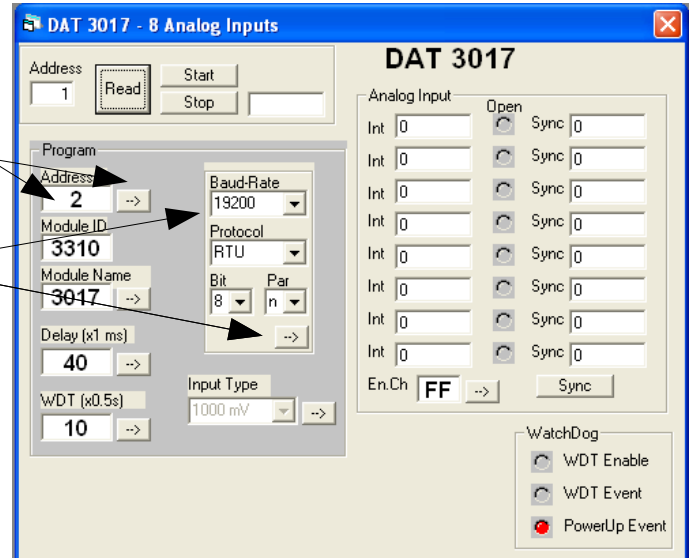
→ To change a parameter, set the proper field and click on the relative “-->” button.

**Example:** configure the device to Address 2, 19200bps

→ Set the field “Address” to 2 then click on the relative “-->” button.

→ Set the field “Baud-Rate” to 19200 then click on the relative “-->” button.

→ Click on “Read” to check for the successful change of parameters.

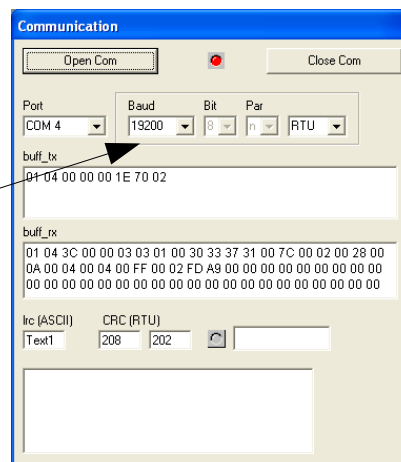


### STEP 4 – Test the device

→ Remove the INIT connection and reset the device (power off and power on).

→ In the Communication window, click on “Close COM”. The red led will turn off.

→ Set the baud rate to 19200, then click on “Open COM”. The red led will turn on.



→ In the DAT3017 form, set in the Address field at the top left the address of the device (2).

→ Click on “Read”. All fields will show the actual setting. Click the “Start” button to update continuously the parameters. Click “Stop” to terminate the update.

If no errors occurs, the device is successfully configured.

