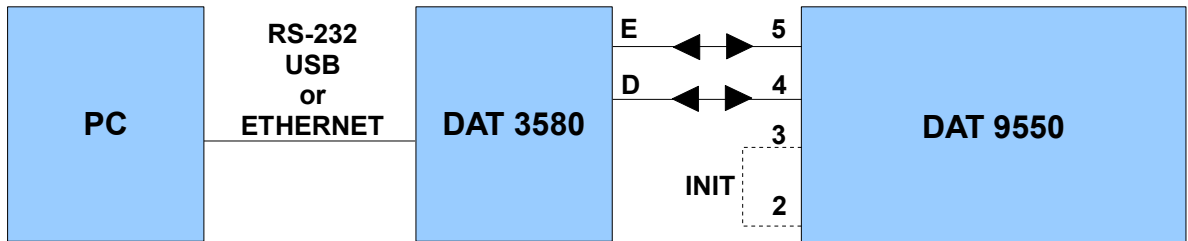


DAT9550 Project example: Simple display configuration

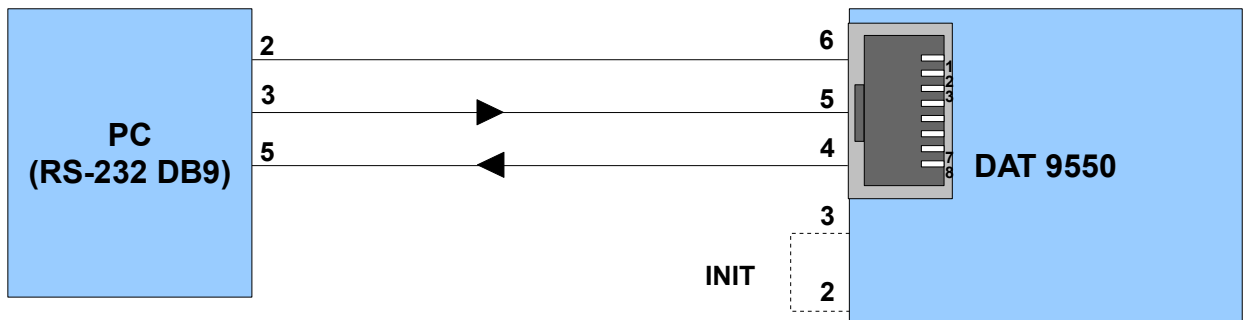
STEP 1 – Checking configuration

Connect the devices as following:

RS-485 : Connect the PC to serial converter (DAT3580 or similar) and devices to setup as following:



RS-232 devices: Connect the PC to the devices to setup as following:



In Dev9K, follow this procedure:

- Settings → Controller
 - Set the proper COM port, baud rate and address of DAT9550 and Click OK.
 - If unknown, these parameters are visible in the Config menu of the display (refer to the datasheet for the procedure to access to the menu)
- Click the Connect button and check for Communication OK.

STEP 3 – Set Display visualization

Main project of DAT9550

Click on New Project and insert the following function blocks:

Function Block 1)

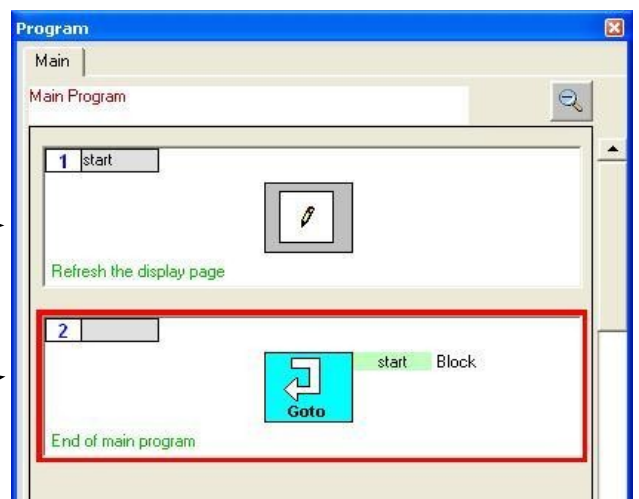
“Display->Call Page” function to refresh the display page →

Label = start

Function Block 2)

“Flow->Goto” function to return the main program to the first Function Block. →

Block = function block to go to (“start”)



Note: it is possible to insert more function blocks, such as math functions, modbus readings, ect. It is very important to recall the “Display” function (refresh) as fast as possible to avoid blinking of the display.

Display page setting

- Tools → Display

- To insert a new graphical page, click on the button (A). (in new project, the first page is automatically created)

- Insert a Label object

A label object visualizes a fixed string on the display (B).
Select the Label object (C) and click on the + button (D)

Insert the following parameters:

Format = small
Label = *Input =*
Position = x 0, y 0
Reg, Bit and Alternative = not used

Click on the Set button (E)

- Insert a Number object

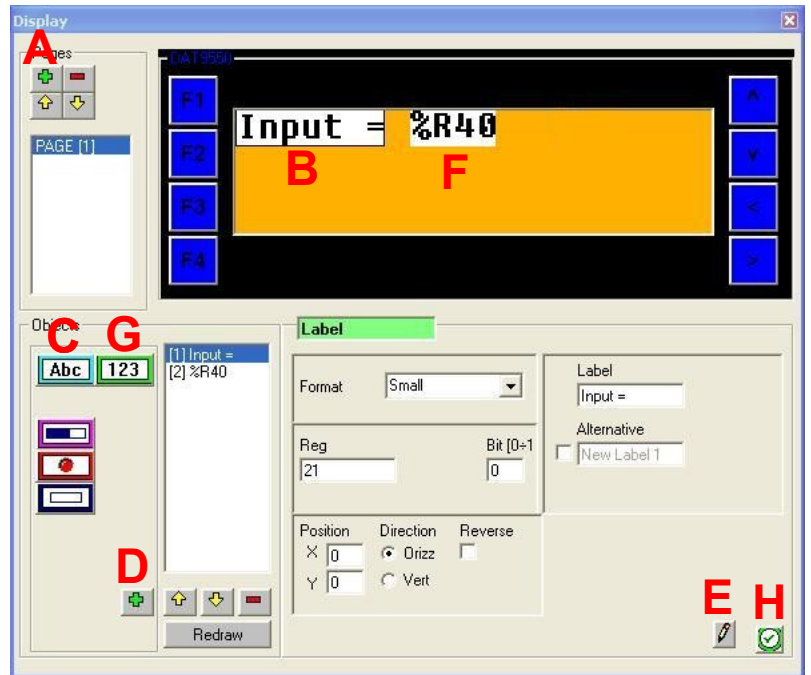
A Number object visualizes a variable value from an internal register (F).
Select the Number object (G) and click on the + button (D)

Insert the following parameters:

Format = small
Label = *%+5.1f*
Position = x 48, y 0
Reg = 40 Type=Int

Click on the Set button (E)

- Click on the confirm button (H)



STEP 4 – Running application

→ Save the project, reconnect the controller and set DAT9550 in Debug mode (click on Debug button). Click on Download button and in the Download form click on Ok. At the end, set in Release mode.

To check the functionality, write the value “1234” in the internal register %R40.
The display will show a page similar to the following picture:

