



FEATURES

- Configurable input for RTD, TC, mV, V, mA, Resistance and Potentiometer
- Galvanic isolation at 2000 Vac
- Configurable output in current or voltage
- Configurable by Personal Computer
- High accuracy
- On-field reconfigurable
- EMC compliant – CE mark
- Suitable for DIN rail mounting in compliance with EN-50022 and EN50035

GENERAL DESCRIPTION

The converter DAT 4135/SEL is able to execute many functions such as : measure and linearisation of the temperature characteristic of RTDs sensors, conversion of a linear resistance variation, conversion of a standard active current signal , conversion of a voltage signal even coming from a potentiometer connected on its input. Moreover the DAT 4135/SEL is able to measure and linearise the standard thermocouples with internal cold junction compensation. In function of programming, the measured values are converted in a current or voltage signal. The device guarantees high accuracy and performances stability both in time and in temperature.

The DAT4135/SEL is a special version of the standard device; using it, is possible to disable the output by the SEL digital command; this operation is made applying a positive voltage signal to the terminal O (SEL). The output of the device is setted in a high impedance state; this condition allows the connection in parallel of other similar devices, measuring the output signal of the desired device.

The programming of the DAT 4135/SEL is made by a Personal Computer using the software PROSOFT, developed by DATEXEL, that runs under the operative system "Windows™". By use of PROSOFT, it is possible to configure the converter to interface it with the most used sensors . In case of sensors with a no-standard output characteristic, it is possible to execute, via software, a "Custom" linearisation (per step) to obtain an output linearised signal .For Resistance and RTDs sensors it is possible to program the cable compensation with 3 or 4 wires; for Thermocouples it is possible to program the Cold Junction Compensation (CJC) as internal or external.

It is possible to set the minimum and maximum values of input and output ranges in any point of the scale, keeping the minimum span shown in the table below. Moreover it is available the option of alarm for signal interruption (burn-out) that allows to set the output value as high or low out of scale .

The terminals of the current signal on input side must be only connected to active current loop.

The 2000 Vac isolation between input and power supply/output eliminates the effects of all ground loops eventually existing and allows the use of the converter in heavy environmental conditions found in industrial applications. It is housed in a plastic enclosure of 12.5 mm thickness suitable for DIN rail mounting in compliance with EN-50022 and EN-50035 standards.

USER INSTRUCTIONS

The converter DAT 4135/SEL must be powered by a direct voltage between 18 to 30 V applied to the terminals R(+Vdc) and Q (GND2) as shown in the section "Power supply connections". The output signal, in voltage or current, is provided to the terminals N(OUT) and M (GND2), as shown in the section "Output connections". The SEL input command (signal 4+30 Vdc) must be applied to the terminals O (SEL) and M (GND2) as shown in the section "SEL input connections"; if this function is not used, the terminal O will be not connected or connected to the terminal M (GND2); in these conditions the device remains in the measure condition. The input connections must be made as shown in the section "Input connections".

To configure, calibrate and install the converter, refer to sections " DAT4135/SEL: configuration and calibration" and "Installation Instructions".

TECHNICAL SPECIFICATIONS (Typical at 25 °C and in nominal conditions)

Input type	Min	Max	Min. span	Input calibration (1)	POWER SUPPLY
TC(*) CJC int./ext.				RTD > of ±0.1% f.s. or ±0.2°C	Supply voltage 18 .. 30 Vdc
J	-200°C	1200°C	100 °C	Low res. > of ±0.1% f.s. or ±0.15 Ω	Reverse polarity protection 60 Vdc max
K	-200°C	1370°C	100 °C	High res. > of ±0.2% f.s. or ±1 Ω	Current consumption
S	-50°C	1760°C	400 °C	mV, TC > of ±0.1% f.s. or ±18 uV	Current output 40 mA max.
R	-50°C	1760°C	400 °C	Volt > of ±0.1% f.s. or ± 2 mV	Voltage output 20 mA max.
B	400°C	1820°C	400 °C	mA > of ±0.1% f.s. or ± 6 uA	Output Load Resistance (Rload)
E	-200°C	1000°C	100 °C	Output calibration	Current output ≤ 650 Ω
T	-200°C	400°C	100 °C	Current ± 7 uA	Voltage output ≥ 3.5 KΩ
N	-200°C	1300°C	100 °C	Voltage ± 5 mV	Limitation current about 25 mA
RTD(*) 2,3,4 wires				Input impedance	SEL input command
Pt100	-200°C	850°C	50°C	TC, mV ≥= 10 MΩ	Disable output 4+30 Vdc
Pt1000	-200°C	200°C	50°C	Volt ≥= 1 MΩ	Enable output 0 Vdc or not connected
Ni100	-60°C	180°C	50°C	Current ~ 50 Ω	
Ni1000	-60°C	150°C	50°C	Linearity (1)	
Voltage				TC ± 0.2 % f.s.	ISOLATION
mV	-400 mV	+400 mV	2 mV	RTD ± 0.1 % f.s.	Input – Power supply/Out 2000 Vac, 50 Hz, 1 min.
mV	-100 mV	+700 mV	2 mV	Line resistance influence	ENVIRONMENTAL CONDITIONS
Volt	- 10 V	+10 V	500 mV	TC, mV ≤=0.8 uV/Ohm	Operative Temperature -20°C .. +70°C
Potentiometer				RTD 3 wires 0.05%/Ω (50 Ω balanced max.)	Storage Temperature -40°C.. +85°C
(Nominal value)	0 Ω	200 Ω	10%	RTD 4 wires 0.005%/Ω (100 Ω balanced max.)	Humidity (not condensed) 0 .. 90 %
	200 Ω	500 Ω	10%	RTD excitation current	Maximum Altitude 2000 m
	0.5 KΩ	50 KΩ	10%	Typical 0.350 mA	Installation Indoor
RES. 2,3,4 wires				CJC comp. ± 0.5°C	Category of installation II
Low	0 Ω	300 Ω	10 Ω	Thermal drift (1)	Pollution Degree 2
High	0 Ω	2000 Ω	200 Ω	Full scale ± 0.01% / °C	MECHANICAL SPECIFICATIONS
Current				CJC ± 0.01% / °C	Material Self-extinguish plastic
mA	-10 mA	+24 mA	2 mA	Burn-out values	IP Code IP20
Output type	Min	Max	Min. span	Max. values about 23 mA or 10.8 Vdc	Wiring wires with diameter 0.8+2.1 mm ² /AWG 14-18
Direct current	0 mA	20 mA	4 mA	Min. values about 0 mA or 0 Vdc	Tightening Torque 0.8 N m
Reverse current	20 mA	0 mA	4 mA	Response time (10÷ 90%)	Mounting in compliance with DIN rail standard EN-50022 and EN-50035
Direct voltage	0 V	10 V	1 V	about 400 ms	Weight about 90 g.
Reverse voltage	10 V	0 V	1 V		EMC (for industrial environments)
					Immunity EN 61000-6-2
					Emission EN 61000-6-4

(1) referred to input Span (difference between max. and min. values)
 (*) For temperature sensors it is possible to set the input range also in °F; to made the conversion use the formula: °F = (°C*9/5)+32)

DAT 4135/SEL: CONFIGURATION AND CALIBRATION

Warning: during these operations the device must always be powered.

- CONFIGURATION

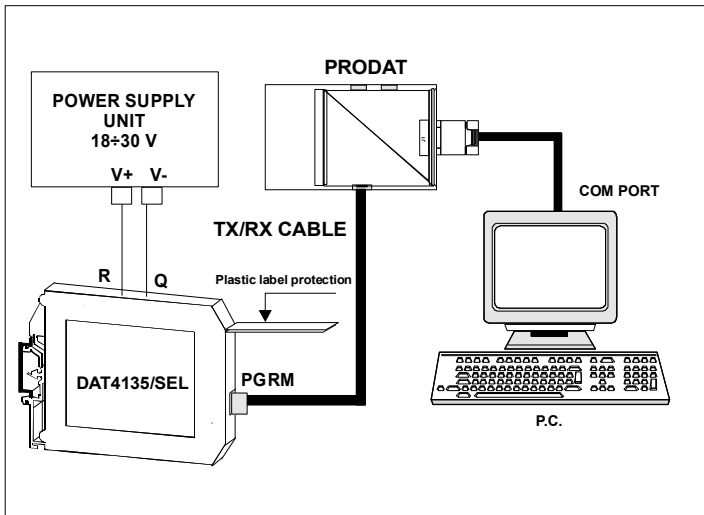
- 1) Power-on the DAT 4135/SEL by a direct voltage between 18 ± 30 V .
- 2) Open the plastic label protection on front side of DAT 4135/SEL.
- 3) Connect the interface PRODAT to the Personal Computer and to device (connector PGRM - see section " DAT 4135/SEL: PROGRAMMING").
- 4) Run the software PROSOFT.
- 5) Set the parameters of configuration .
- 6) Program the device.

- CALIBRATION CONTROL

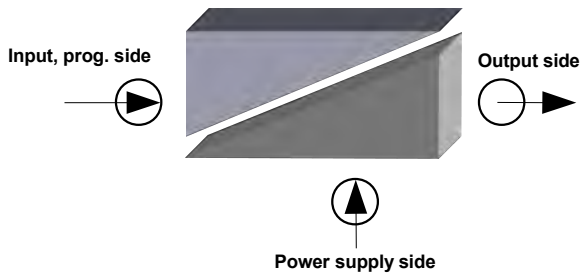
With software PROSOFT running:

- 1) Connect on the input a calibrator setted with minimum and maximum values referred to the electric signal or to the temperature sensor to measure.
- 2) Set the calibrator at the minimum value.
- 3) Verify that the DAT 4135/SEL provides on output the minimum setted value.
- 4) Set the calibrator at the maximum value.
- 5) Verify that the DAT 4135/SEL provides on output the maximum setted value.
- 6) In case of regulation of value obtained in the step 3 and 5, use the ZERO and SPAN regulators of software PROSOFT. The variation introduced from these regulators must be calculated as percentage of the input range .
- 7) Program the device with the new parameters .

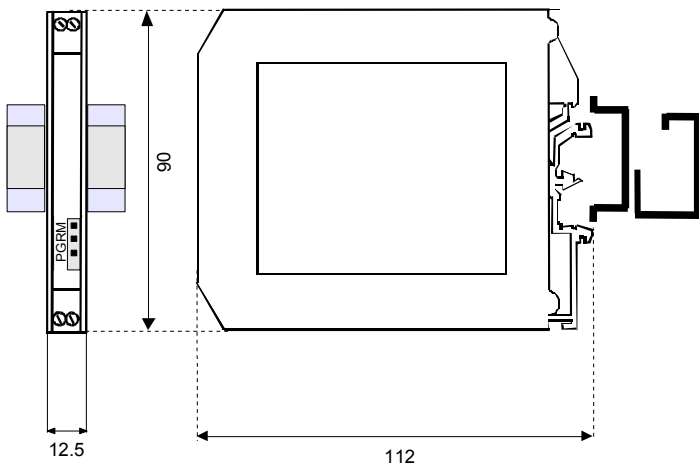
DAT 4135/SEL: PROGRAMMING



ISOLATION STRUCTURE



DIMENSIONS (mm) & CONNECTOR PGRM



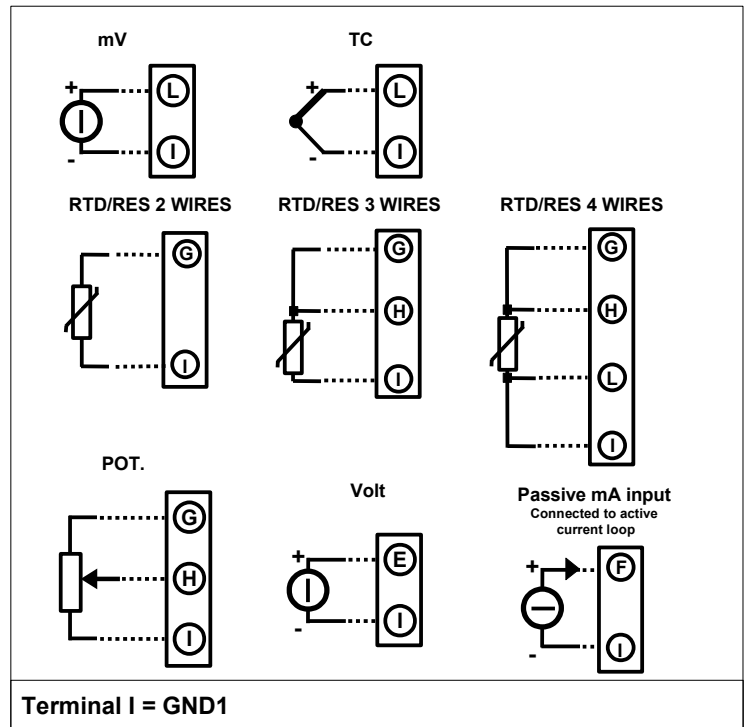
INSTALLATION INSTRUCTIONS

The device DAT 4135/SEL is suitable for DIN rail mounting.

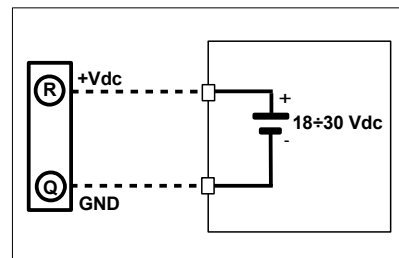
It is necessary to install the device in a place without vibrations; avoid to routing conductors near power signal cables .

DAT 4135/SEL: CONNECTIONS

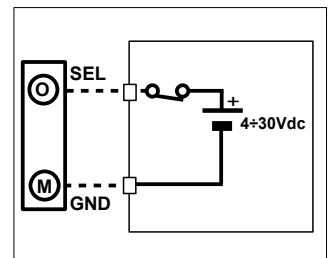
INPUT CONNECTIONS



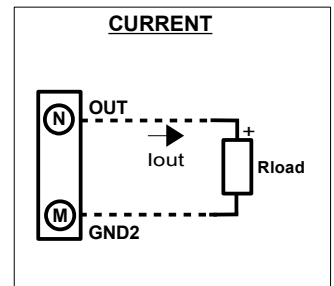
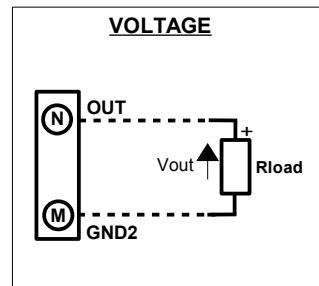
POWER SUPPLY CONNECTIONS



SEL INPUT CONNECTIONS



OUTPUT CONNECTIONS



Note: terminal P = GND2

HOW TO ORDER

The DAT4135/SEL is provided as requested on the Customer's order. Refer to the section "Technical specification" to determine input and output ranges. In case of the configuration is not specified, the parameters must be set by the user.

ORDER CODE EXAMPLE:

