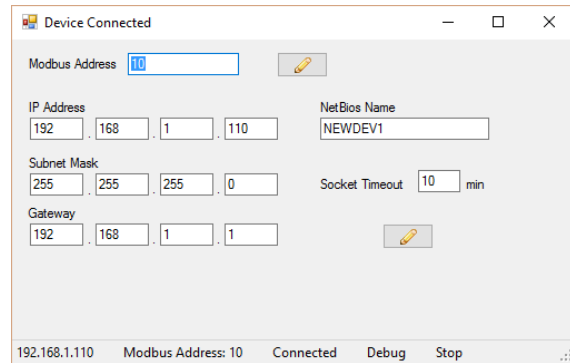
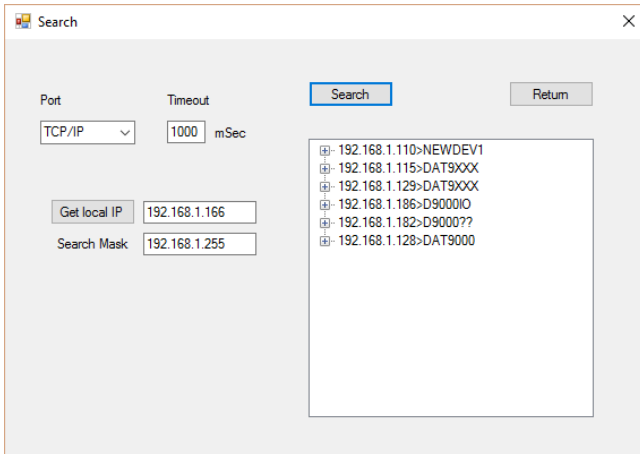


GENERAL DESCRIPTION

SearchDevice is a tool developed by Datexel srl, running under the operative system Windows® designed to search the devices over the Ethernet and to set the principal communication parameters.



PROCEDURE OF INSTALLATION

- Close eventual active or background applications.
- Run the file *SearchDeviceInstallator.exe*
- Follow the Installation Wizard.

To connect devices and interfaces refer to the technical Data-sheets .

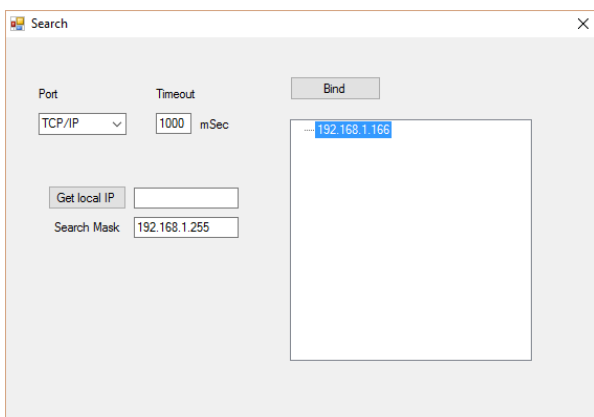
SYSTEM REQUIREMENTS

Operative System	Windows® XP / Vista / 7 / 8.1 /10
Available Hard Disk space	60 KB
Framework version required	from 4.0

RUN SEARCHDEVICE

Execute the program at the path “Start \ Programs \ **SEARCHDEVICE.exe**”.
When the software is running, the default window appears (Pict. 1).

Pict. 1

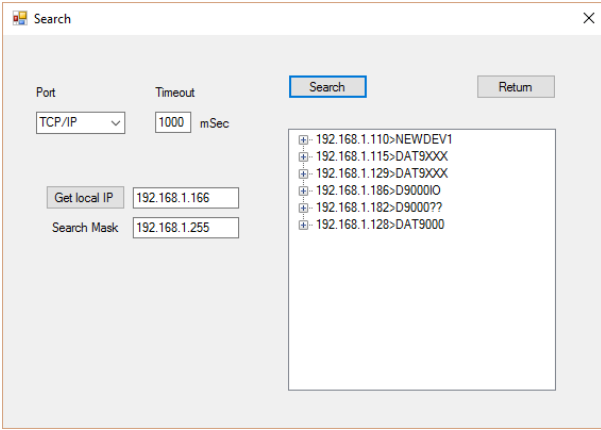


In the main window it is possible to see the available networks in the PC.

Clicking the “*Get local IP*” button it is possible to visualize the local IP of the Personal Computer over the Net in use.

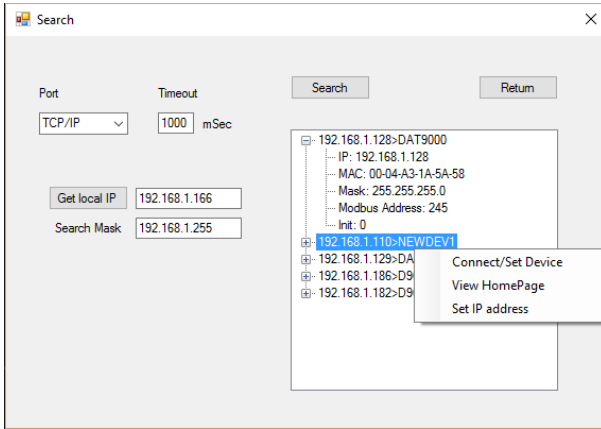
When the correct network has been detected, select it and click the “*Bind*” button to assign the search function.

Pict. 2



Then click "Search" button to search the devices over the network. If the network selected is correct, and so there are one or more devices, the devices found appear in the list. If the network is not correct and the user wants to bind to another network, click the "Return" button

Pict. 3

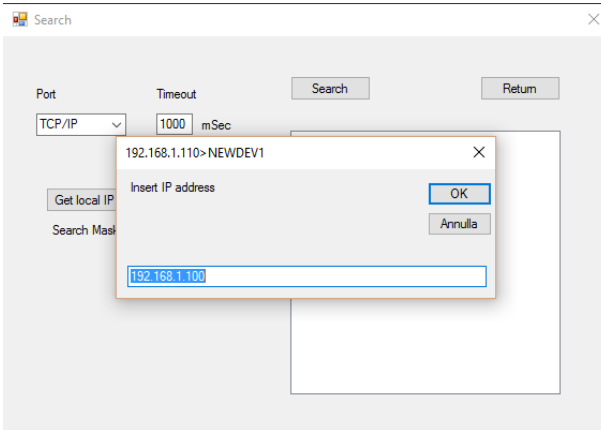


Opening the nodes in the list, it is possible to view some of the device parameters: IP, MAC, Mask, Modbus Address, Init.

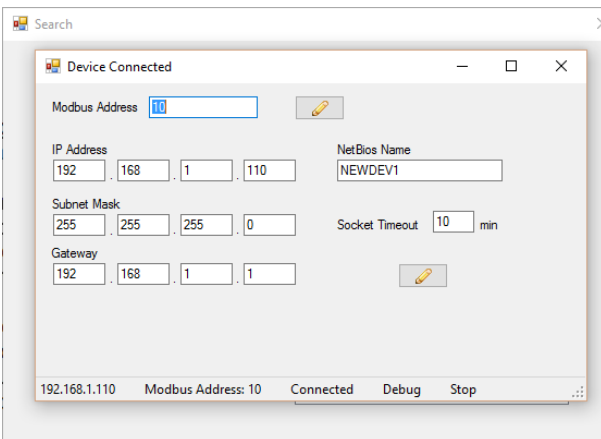
Clicking with the right button of the mouse, contextmenustrip with additional function will appear:

- *Connect/Set Device* allows to connect to device and to set its principal parameters (Pict. 5)
 - *View Homepage* allows to open the web pages of the device on the default browser
 - *Set IP address* allows to set a new IP address to the selected device (Pict.4).
- Insert a valid IP address and wait for reset of the device.

Pict. 4



Pict. 5



When the application is connected to a device, the window beside will be opened (Pict. 5). There it is possible to set the principal Ethernet communication parameters.

It is possible to set:

- a new Modbus address writing it in the appropriate text box and clicking the button with pencil beside
- IP Address, Subnet Mask, Gateway, NetBios Name and Socket Timeout writing them in the appropriate text boxes and clicking the button to confirm (with pencil). On click of this button the data is sent and wait a few seconds for reset of the device.